



TOWN OF Yadkinville

P. O. Box 816
Yadkinville, NC 27055
E-mail: plowe@yadkinville.org
Bus: (336) 679-8732
Fax: (336) 679-6151

101 Woodlyn Drive
Yadkinville, NC



General Information

Site Address:	101 Woodlyn Drive
Parcel #:	581609156907
Site Size:	1.11 acres
Unit Size:	6,000 sq. ft.
Expandable:	NA
Price:	Purchase: \$465,000 Lease: Negotiable
Zoning:	Light Manufacturing (M-1)

Utilities

Electric:	Duke Energy
Water:	Town of Yadkinville
Wastewater:	Town of Yadkinville
Natural Gas:	Frontier Energy
Telecom Fiber:	Yadtel Telecom
Compressed Air:	Yes

Access to Transportation

Nearest Commercial Airport:	Piedmont Triad Intl. Airport
Nearest Airport:	Smith Reynolds Airport
Distance to Nearest Airport:	29.1 Miles (Regional)
Distance to Interstate:	9.8 Miles (I-77)
Road Serving Site:	Service Road (2 Lanes)
Distance to Highway:	0.8 Miles (US-421)

Additional Information

Air Quality:	Attainment
Other:	Fire Insurance (ISO) Rating: 4

**For further information, please contact:
Chris Brown- (336) 679-2656**

Town of Yadkinville ▪ Development & Planning Department
213 Van Buren Street ▪ Yadkinville, NC 27055 ▪ (336) 679-8732

<http://www.yadkinville.org/>

Photo 1



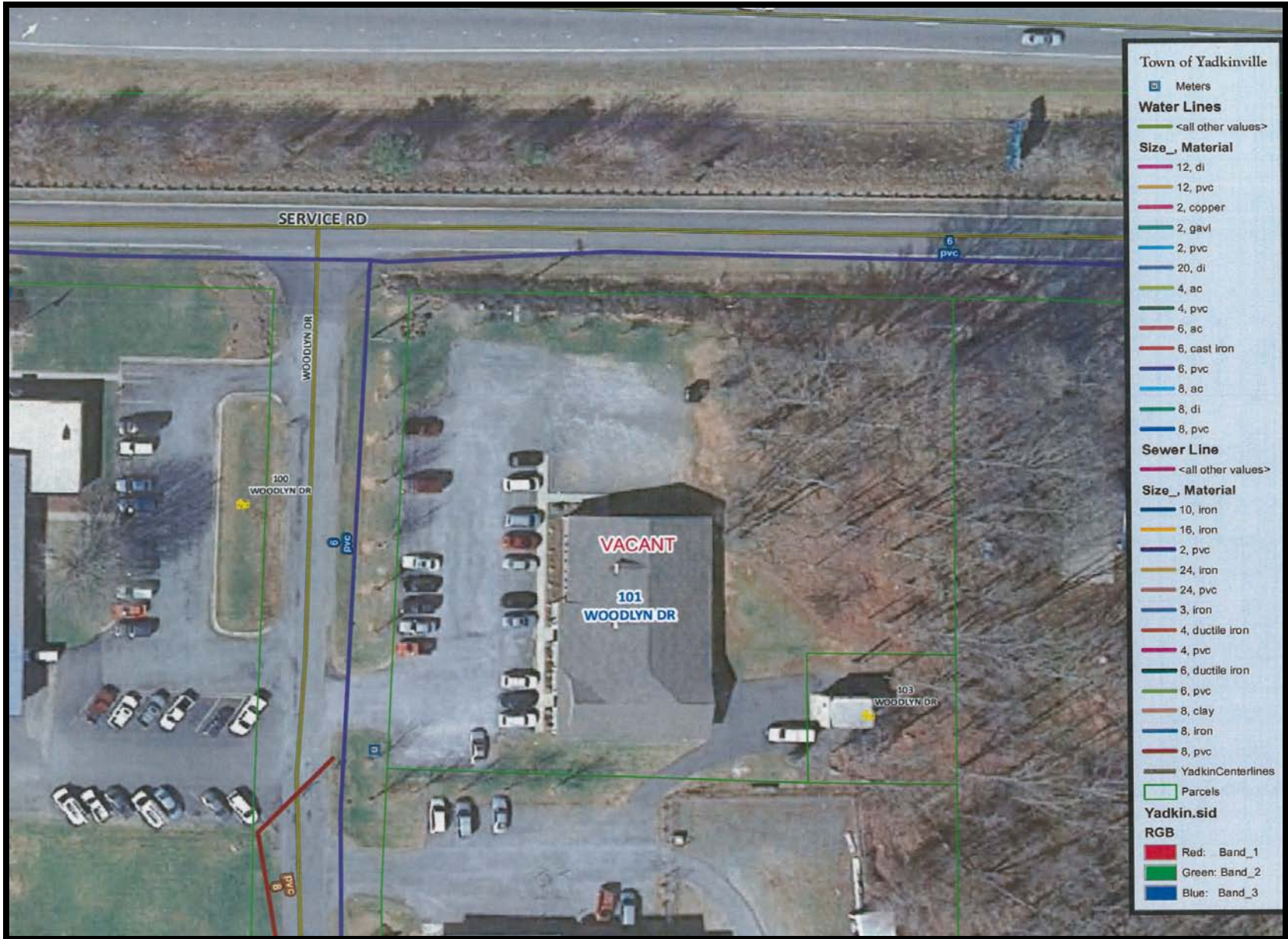
Photo 2



Town of Yadkinville ▪ Development & Planning Department
213 Van Buren Street ▪ Yadkinville, NC 27055 ▪ (336) 679-8732

<http://www.yadkinville.org/>

Water & Sewer Map



Aerial Map



Town of Yadkinville • Development & Planning Department
213 Van Buren Street • Yadkinville, NC 27055 • (336) 679-8732

<http://www.yadkinville.org/>

Topographic Map



Plat Map

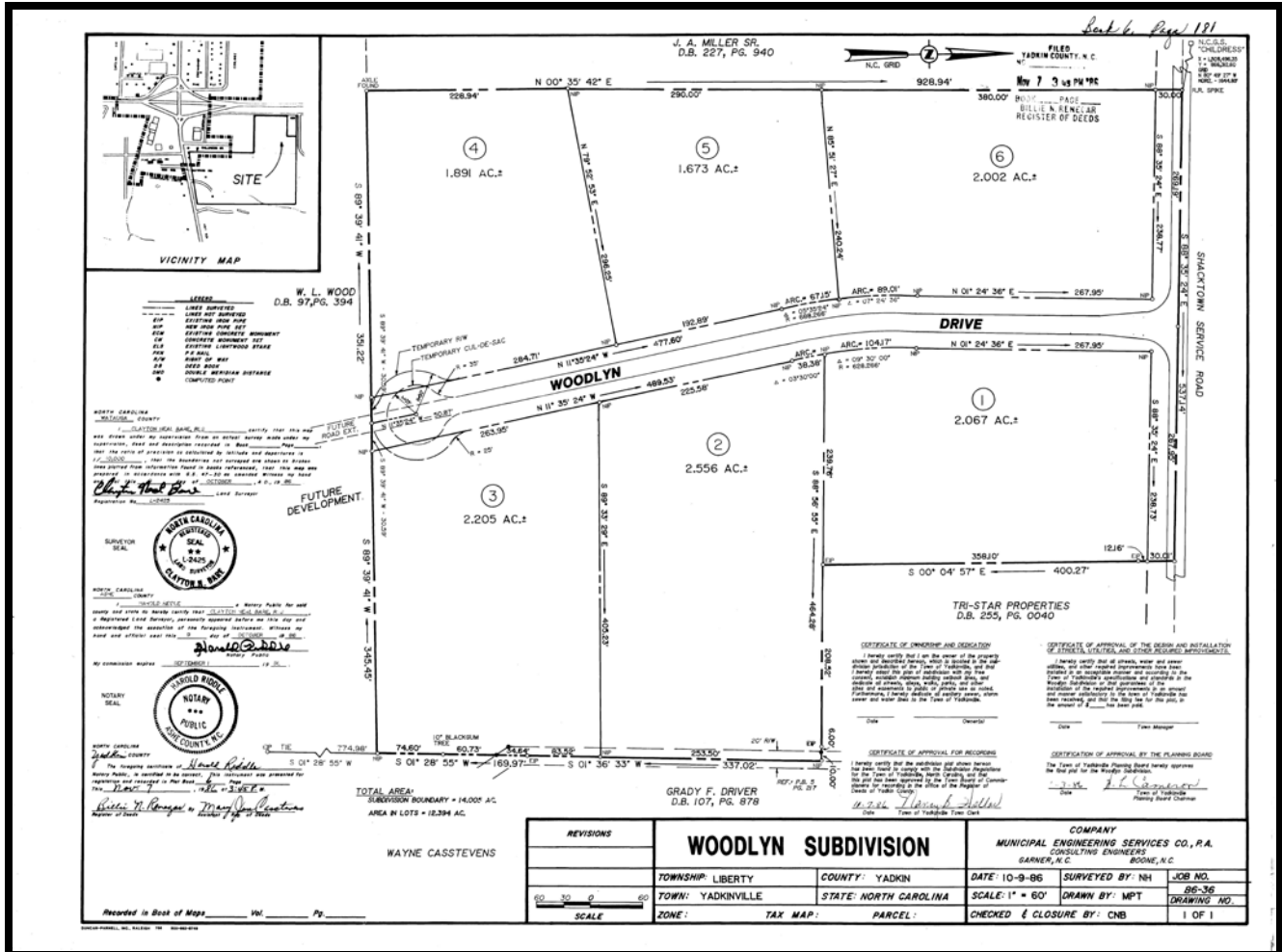


Figure 1- Plat Book 6 Plat Page 181

Town of Yadkinville ▪ Development & Planning Department
213 Van Buren Street ▪ Yadkinville, NC 27055 ▪ (336) 679-8732

<http://www.yadkinville.org/>